

CONCEPT E

IS APPROXIMATELY 2.6 ACRES IN OVERALL SIZE. THE UPPER HILLSIDE AT THE END OF SEWARD STREET IS EXCAVATED TO PROVIDE ROADWAY ACCESS AND AN ON-SITE MATERIAL SOURCE. THE SEAWARD BOUNDARY OF THE FILL HAS MOVED INSHORE 50 FEET FROM CONCEPT D. A SEAPLANE HAULOUT RAMP (WITHOUT A BOARDING FLOAT) IS PROVIDED AT THE NW CORNER OF THE NEW PAD REQUIRING THE DEMOLITION OF AN EXISTING WWII BUNKER UNDER THIS CONCEPT. THE SITE HAS AMPLE SPACE TO PARK SEVERAL SEAPLANES IN THE UPLANDS AND TO ACCOMMODATE 15 VEHICLE PARKING STALLS, A COVERED SHELTER AND AN AVIATION FUEL STORAGE FACILITY. VEGETATIVE BUFFERS ALONG ADJACENT PROPERTIES AND SECURITY FENCING WITH ACCESS GATES ARE PLANNED FOR THE SITE.



9360 Glacier Highway, Ste. 100
 Juneau, Alaska 99801
 Phone: 907-586-2093
 Fax: 907-586-2099
 www.pndengineers.com

DESIGN: CRS CHECKED: CRS SCALE: SCALE IN FEET
 DRAWN: PJD APPROVED: CRS 0 30 60 FT.

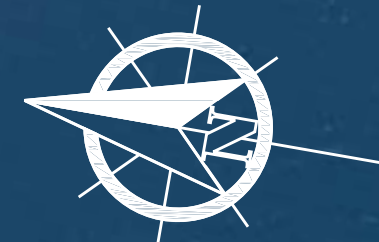
DATE: 8/24/20

SITKA SEAPLANE BASE

SHEET TITLE: **UPLANDS DEVELOPMENT CONCEPT E**

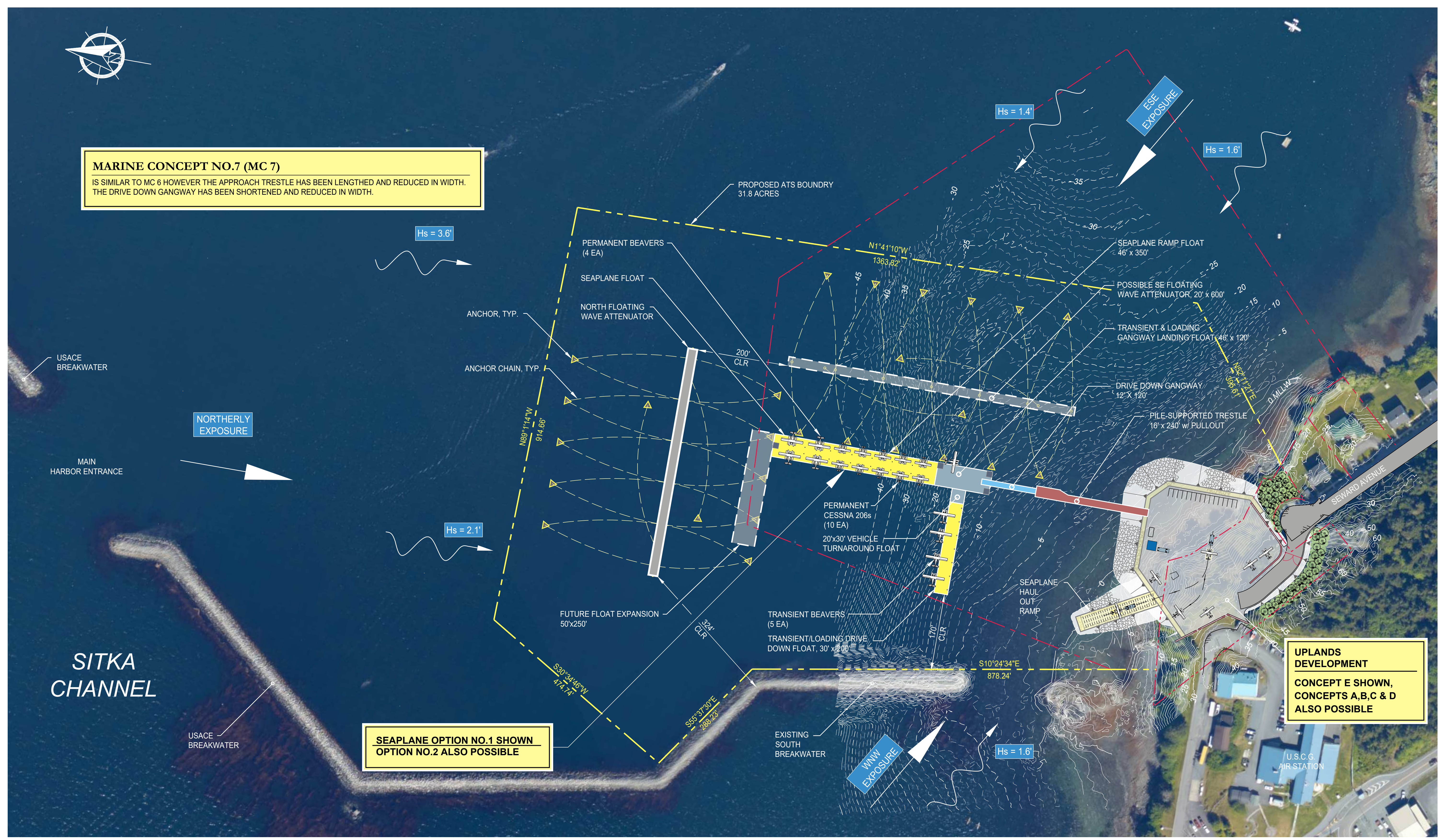
PND PROJECT NO.: 192082.01

E



MARINE CONCEPT NO.7 (MC 7)

IS SIMILAR TO MC 6 HOWEVER THE APPROACH TRESTLE HAS BEEN LENGTHED AND REDUCED IN WIDTH. THE DRIVE DOWN GANGWAY HAS BEEN SHORTENED AND REDUCED IN WIDTH.



NORTHERLY EXPOSURE

SITKA CHANNEL

SEAPLANE OPTION NO.1 SHOWN
OPTION NO.2 ALSO POSSIBLE

UPLANDS DEVELOPMENT
CONCEPT E SHOWN,
CONCEPTS A,B,C & D
ALSO POSSIBLE



NOTES:
Hs = SIGNIFICANT WAVE HEIGHT 100 YEAR RETURN PERIOD
H_{MAX} = 1.7 x Hs

P | N | D
ENGINEERS, INC.

9360 Glacier Highway, Ste. 100
Juneau, Alaska 99801
Phone: 907-586-2093
Fax: 907-586-2099
www.pndengineers.com

DESIGN: CRS CHECKED: CRS SCALE: SCALE IN FEET
DRAWN: PJD APPROVED: CRS 0 100 200 FT.

DATE: AUGUST 2020

SITKA SEAPLANE BASE

SHEET TITLE:
MARINE CONCEPT NO.7A

PND PROJECT NO.: 192082.01

MC 7A